

Musings on the 1906 Atlas

CONTRIBUTED BY HELEN FALLON, VICE PRESIDENT OF THE BOARD OF TRUSTEES, MONTCLAIR HISTORY CENTER

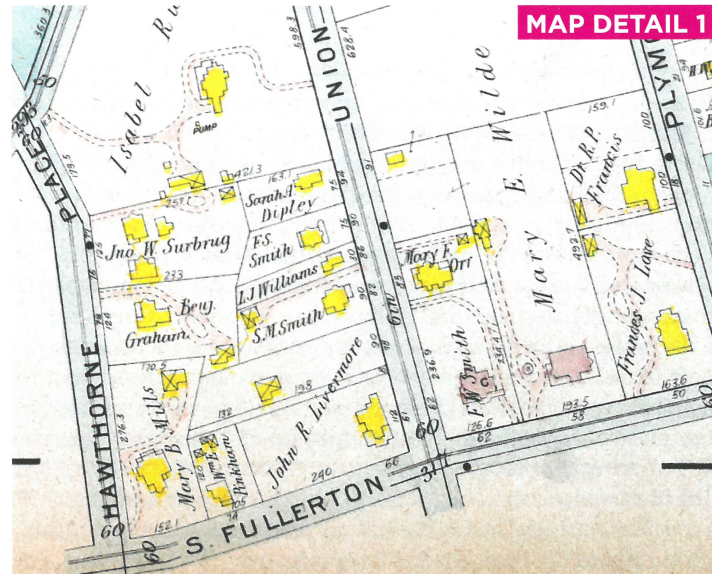
PART ONE OF A TWO PART SERIES

COULD SPEND ALL DAY looking at an old map —how about you? I have, in fact, spent a fair amount of time exploring the 1906 Atlas of Essex County New Jersey, Vol. 3 published by A.H. Mueller & Co. Montclair's streets are depicted in numbered plates. Below are some of the interesting things I observed.

PLATE 21 starts at Montclair's border with West Orange, extends north to Myrtle Street and east to Orange Road.

- Some large properties in this area were named to evoke the bucolic setting that had attracted many New Yorkers to move to Montclair in the 1800s/early 1900s: "Hillcrest," "Woodlands," "Glenwyld." One large property, near the corner of Eagle Rock Way and South Mountain Avenue, was called "Deer Park"—that name is likely even more accurate now!
- John R. Livermore's house, 66 South Fullerton Avenue at the corner of Union Street, was built in 1885 and still stands. It was designed in Queen Anne style by Charles F. McKim of the McKim Mead and White architecture firm. In 2001, the house was expanded and converted into condominiums, but the maple leaf ornament on the turret is reportedly original! (See Map Detail 1)
- As interesting as what you will see on these older maps is what you won't see: you won't find the Montclair Public Library or the United Way/Social Services/Mills buildings (50 and 55 South Fullerton Avenue, respectively) on this map. That block of South Fullerton, between Plymouth and Union) and the immediate surrounding area contained some of the grandest single-family homes in town in 1906. (See Map Detail 1)

PLATE 22 depicts Montclair's south-eastern corner, bordering the towns



MAP DETAIL 1

of West Orange and Glen Ridge, and Montclair streets Woodland, Lexington and Gates to the north.

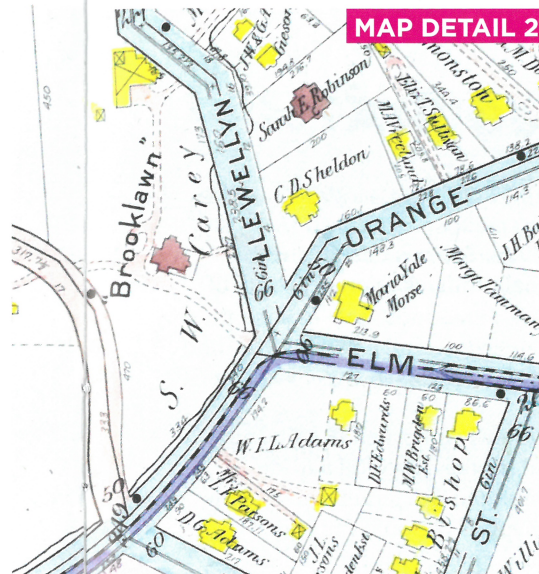
- Excelsior Hose No. 2 is on the corner of Harrison Avenue and Cedar Street; that firehouse still stands.
- "Brooklawn" is the name of the Carey family property known today as Carey's Woods. The stone pillars that today still stand at the corner of Llewellyn/Orange Road/Elm Street seem to mark the position of the original entry into the estate. (See Map Detail 2)

Nishuane School would not be constructed until approx. 1909, but its precursor, the Cedar Street School (built 1888), is seen near the corner of Cedar and High Street. (See Map Detail 3)

- A small "Cedar Street Presbyterian Chapel" and parsonage were located at the corner of High and Cedar Streets, where present-day Nishuane Park is. (See Map Detail 3)

PLATE 23 illustrates Montclair's streets from the town's western border to Park Street, straddling Bloomfield Avenue.

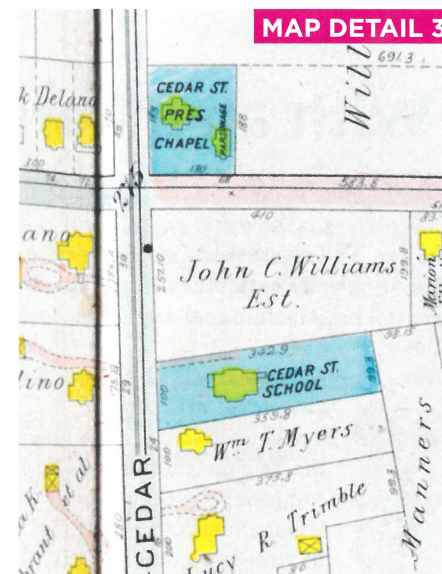
- Wedged in the corner of Church Street, Bloomfield Ave. and South Fullerton was the church -- Old First Presbyterian -- for which the street was named. (See Map Detail 4)



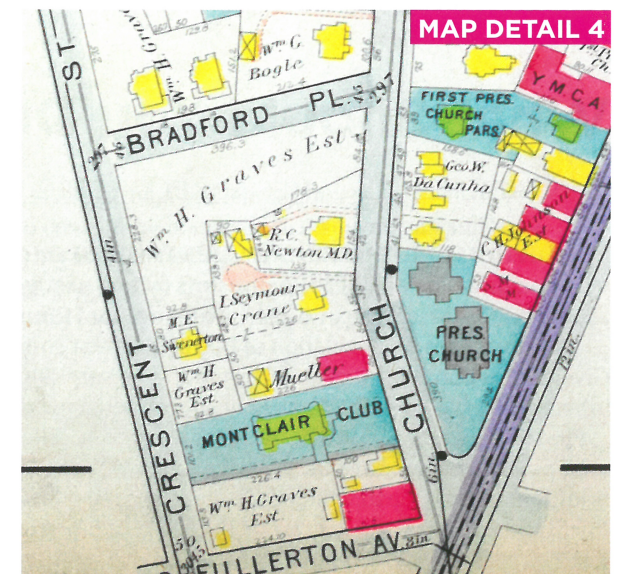
MAP DETAIL 2

Bradford Place was a one-block street that ran from Crescent Street to Church Street, one block west of South Fullerton Avenue. It was named for influential Reverend Amory Howe Bradford of the First Congregational Church around the corner on South Fullerton Avenue; Bradford Place would later be renamed South Park Street and be extended all the way to Bloomfield Avenue. (See Map Detail 4)

The first building constructed as a dedicated high school was located at the corner of Orange Road and Hillside Avenue, just downhill from St. Luke's Place (approximately where today's



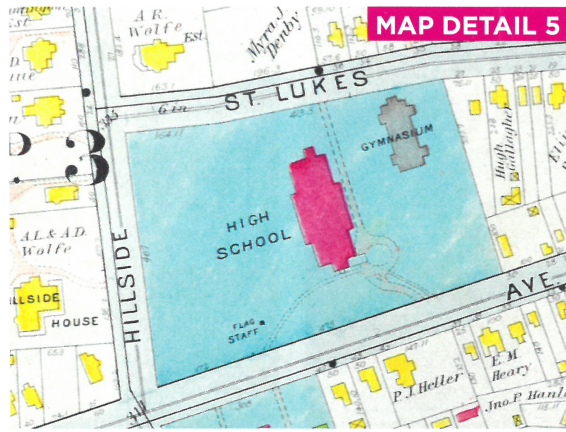
MAP DETAIL 3



MAP DETAIL 4

Hillside School field is). The high school was built in 1893; when the current high school was built on Chestnut Street in 1914, this Orange Road facility was repurposed as the Spaulding Elementary School and razed in the 1930s. (See Map Detail 5)

You, too, can explore these maps by making an appointment at the Montclair History Center, 110 Orange Road by contacting mail@montclairhistorical.org or 973-744-1796. This atlas edition is also available at the main branch of the Montclair Public Library, 50 South Fullerton Avenue.



MAP DETAIL 5

YOUR REAL ESTATE AND WILLS TRUSTED EXPERTS

LUBENESKY & ASSOCIATES
Legal matters

539 Valley Road
Suite 2A
Upper Montclair
973-707-3393

www.lubenesky.com



Let Us Help You Find Your Path

Authorized Dealer for Top Cycling Brands

TREK SPECIALIZED
Electra FELT
PINARELLO

Stay in touch!
f t G+ P

Experts in Customer Enthusiasm
Montclair BIKERY
montclairbikery.com

145 Valley Road, Montclair • (973) 744-7252

LENFELL ASSOCIATES LLC
Accounting. Tax. Forensics. Advisory
41 The Crescent, Montclair, NJ 07042

Robert Crook CPA, Managing Director
908.507.6826 • robertlenfell@gmail.com

For us we enjoy a challenge,
no problem is too big or too small.

www.LenfellAssociates.com

Award Winning Cuisine at Montclair Landmark

23 Watchung Plaza
Montclair, NJ
(973) 744-2090

La Couronne Restaurant
Montclair NJ
lacouronnerestaurant.com